

ADATMV5 - Monopost Automated Torque Tester



Automated Clamping system & Customized clamps



6 cycles available – satisfy various of products test request

Technical specifications:

- Using by touch screen display
- Measures in opening and closing directions
- Measuring range: 00.00 to 99.00 Kgf.cm
- 6 measuring cycles: **Torque closing / Reach position / Release + break / Release + break + over screw / Non-destructive test / Cork extraction test**
- Units: Kgf.cm / N.m / Inch.lbs
- Rotating angle & speed adjustable under certain cycle
- Accuracy: ± 0.5 % of full scale
- 30 products memorization
- 10 thresholds (limits) option
- 10 operators memorization
- Configuration by protected password (administrator)
- Memorization up to 100 measures (transferable)
- Dynamic display: statistics / hour / date
- Display: product name / operator / batch N° / line N°
- 1 RS232 output and 1 printer output (software & printer)
- Language: English, French, Spanish, others on request
- Delivered with calibration certificate COFRAC
- 110 / 230 V - 50/60 Hz

Automated part:

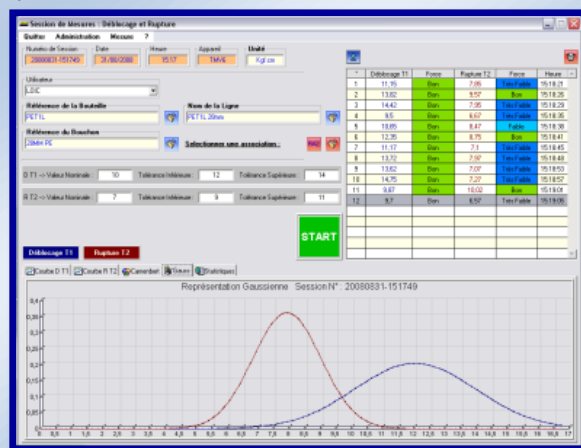
- Safety door
- Automatic zero before restarting cycle
- Settable height of column for all samples
- Easy-fast selector for cycles
- Settable speed for opening and closing operations
- Customized cycles
- Special pneumatic chuck available
- Special multi format system for both bottle and preforms
- Dynamometric system

Mechanical specifications:

- Stainless steel Frame
- Choice of measuring chucks: Beverage / Cosmetic / Pharmacy
- Dimensions: 610 (L) x 570 (W) x 1080 (H) mm
- Weight: 94 kg

Optional parts:

- Mini printer
- QUALITORQ Software
- Customized display & cycles
- Calibration pack
- Dynamometric system



“QUALITORQ” Software (Optional)



Calibration pack (Optional)



Mini printer (Optional)



Dynamometric system (Optional)



Automatic squeezing clamping system for PET packaging (Optional)