

# BT ETA 5 - Touch Screen Dynamometric Torque Bottle DESIGNED TO BE INSTALLED UNDER CAPPING HEADS

Our Torquemeters are designed with a special mechanical system for measuring torque which cancels most non-coaxial and top load influences on the measurement. These features cancel most operator influences on the measurement for maximum repeatability.



**Stainless Steel Box**



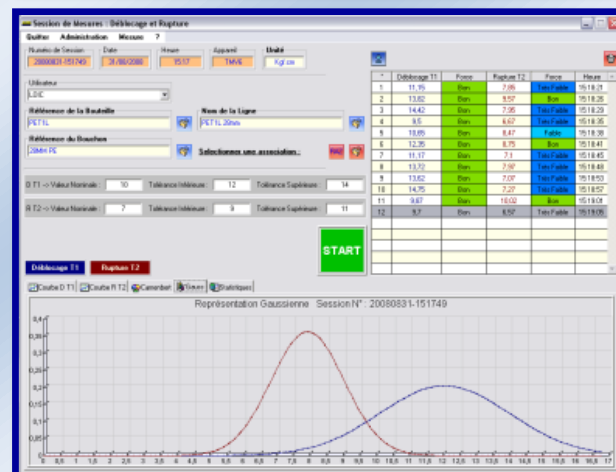
**Bottle realized on measure**

## Technical specifications:

- Touch screen display
- Measurements in opening and closing directions
- Measuring range: 00.00 to 99.00 Kgf.cm
- 3 measuring modes (mean, peak, peak+info)
- Units: Kgf.cm / Inch.lbs / daN.cm / N.m / N.cm
- Accuracy:  $\pm 0,2\%$  of full scale
- 50 product memory with 4 limits each
- 4 thresholds by product (Low, v Low, High, v High)
- 15 operator memory
- Setting of files by administrator code
- Store and transfer up to 990 measurements
- Message + bar-graf f(x) of torque value
- Dynamic display: statistics, hour, date
- Display: product name, operator, batch N°, line N°
- 2 RS USB output (PC – printer)
- Language: French, Italian, Spanish, English, German
- Delivered with calibration certificate COFRAC
- 110 / 230 V - 50/60 Hz

## Mechanical specifications:

- Stainless steel frame / IP 64
- Choice of measuring table: Food/Cosmetic/Pharmacy
- Optional battery
- Dimensions: Customize
- Weight: 7 kg



**QUALITORQ software (Optional)**

**Optional parts:**

- Mini printer
- Printing of results & statistics (hour+date)
- QUALITORQ Software
- Analog curve 10 000 pts / sec Software
- Analog output
- Customizable display
- PLC integration on request
- Easy / Safe opening bloc
- Pack Verif calibration
- Transport case

**Mini-printer (Optional)**