

DYNA-4000 Dynamometer

- Maximum top load tester for PET bottles & Cans



PET Bottle test



Can test

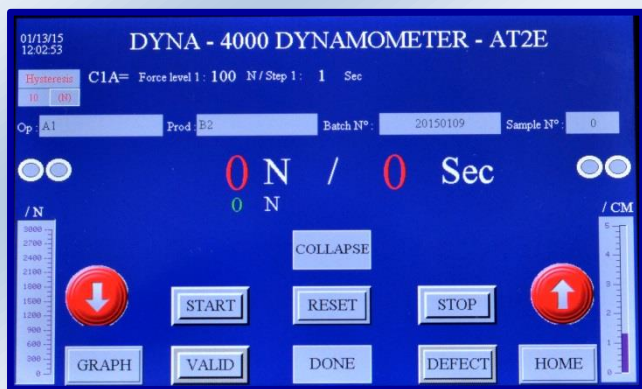


Control panel

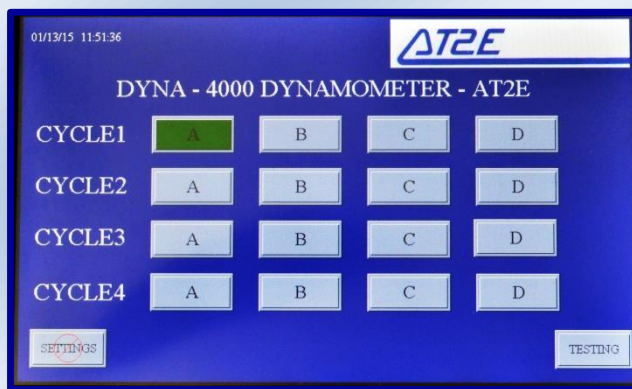
The DYNA-4000 is an instrument for testing the top load resistance ability on PET bottles or cans. Designed for easy operation and maintenance, and fully conform to tests requirements according to international standards. The pressure test of containers is made up to a predefined pressure point (trial test) or until destruction.

Characteristics:

- PLC integrated
- User defined test cycle (up to 4 steps of force and holding time) satisfies different test request
- Full Stainless steel and aluminum machine
- Various safety design
- RS232C output
- Touch screen LCD
- Dynamic display: statistics / hour / date
- Display: product name / operator / batch N° / sample N°
- Can store 10 operators and 30 products
- User defines the batch number and sample number
- Review the real-time testing graph



Testing interface



Cycle selection

Technical specifications:

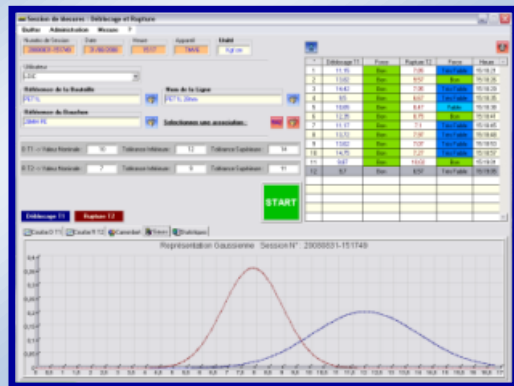
- Measuring range: 0-1000/0-3000/0-5000/0-10000 N (By order)
- Resolution: 1N under 5000N range / 10N at 10000N range
- Sample capacity: by order
- Power: 220 V, 50-60 Hz
- Dimension: 500(L) x 440(W) x 780(H) mm
- Net weight: 50 kg

Optional part:

- High accuracy calibration pack
- Mini printer



Mini printer (Optional)



“QualiForce” software