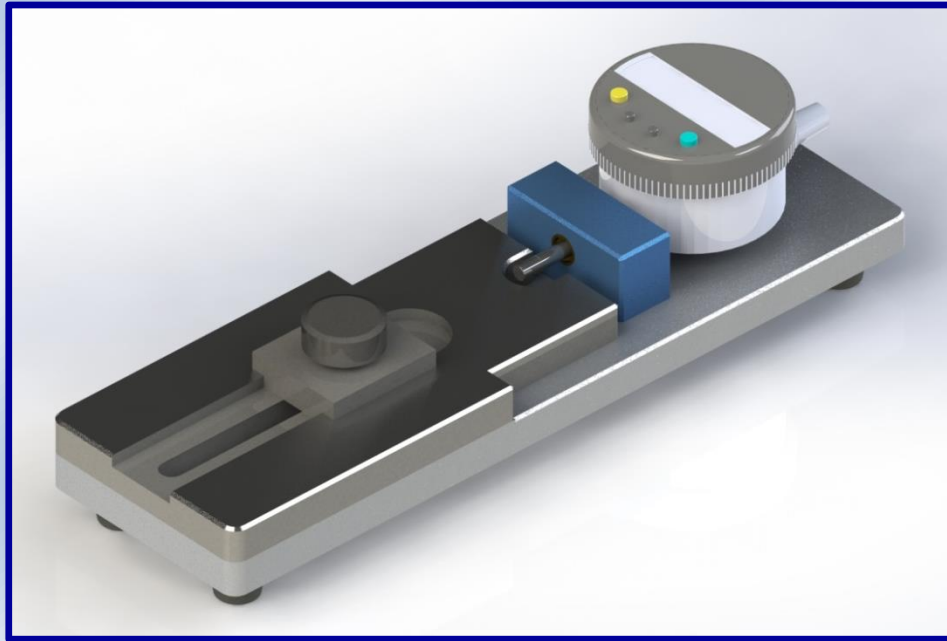


ECDG-1 End Curl Diameter Gauge



ECDG-1 End Curl Diameter Gauge is for quick measure of the Curl Diameter of ends

Easy-operation design offers a fast and accurate measurement of the Curl Diameter. For each end type, a corresponding calibration block will be supplied along with the gauge.

In order to avoid the manual recording error, the gauge can be connected to SPC system with DTB-1 Data Transporting Box and cable. So that, the data can be transferred to SPC system DTB-1 and cable.

Technical specifications:

Measuring range	: $\Phi 50\text{-}\Phi 110$ mm
Resolution	: 0.01 mm
Accuracy	: ± 0.01 mm
Sample End Type:	: 113# - 401# (larger by order)
Overall size	: 265(L) x 80(W) x 195(H) mm
Net weight	: 2 kg