

For - BEVERAGE &amp; FOOD / COSMETIC / PHARMACEUTICALS / CHEMISTRY / METROLOGY

# TMV7 - Touch Screen Electronic Torque Tester

Our torque tester are designed with a special mechanical system for measuring torque which cancels most non-coaxial and top load influences on the measurement. These features cancel most operator induced influences on the measurement for maximum repeatability.



TMV7 with agro table or fast squeeze system

## Technical specifications:

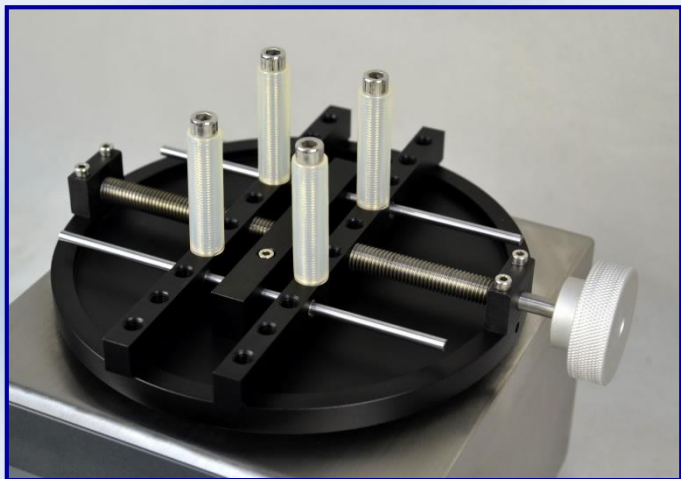
- 7" Touch screen color display
- Measures opening and closing directions
- 0.030 to 4.000 Kgf.cm in high accuracy mode
- Measuring range: 00.00 to 99.00 Kgf.cm
- 3 measuring modes (mean, peak, peak+infos)
- Special mode RELEASING & BREAKING Torque
- Units: Kgf.cm / Inch.lbs / daN.cm / N.m / N.cm
- Accuracy:  $\pm 0.2\%$  of full scale
- 30 product memory with 4 limits each
- 4 thresholds by product (V Low, Low, High, v High)
- 10 operators memory
- 8 Access levels with code (op, Super op, admin)
- Storage and transfer up to 990 measurements
- Message + bar graph of torque value
- Dynamic display: statistics, hour, date
- Display: product name, operator, batch N°, line N°
- Last measure curve
- 2 outputs : RS232 & mini USB (software & printer )
- Language: French / Italian / Spanish / English
- Delivered with ASTM calibration certificate
- 110 / 230 V - 50/60 Hz
- Transportation case



High resolution & color touch screen



User-friendly testing interface



Enhanced agro table



Fast squeeze system

**Mechanical specifications:**

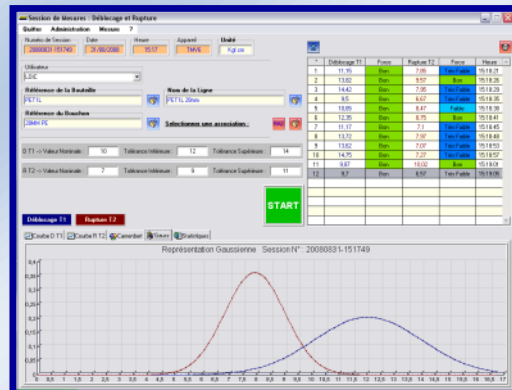
- Stainless steel frame
- Choice of measuring table: Agro / Fast squeeze system
- Dimensions: 370x215x150 to 200mm
- Weight: 7 kg

**Optional parts:**

- QUALITORQ Software CFR 21- FDA except audit trail (For data storage and statistics analysis)
- Easy / Safe opening bloc
- Mini printer
- Calibration pack
- Portable case
- Battery



Mini printer (Optional)



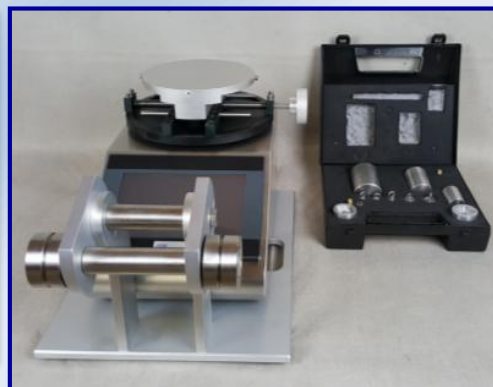
QUALITORQ software (Optional)



Easy opening bloc (Optional)



Portable case (Optional)



Calibration pack (Optional)