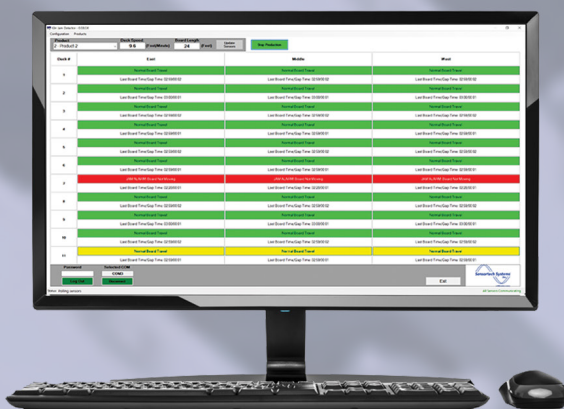
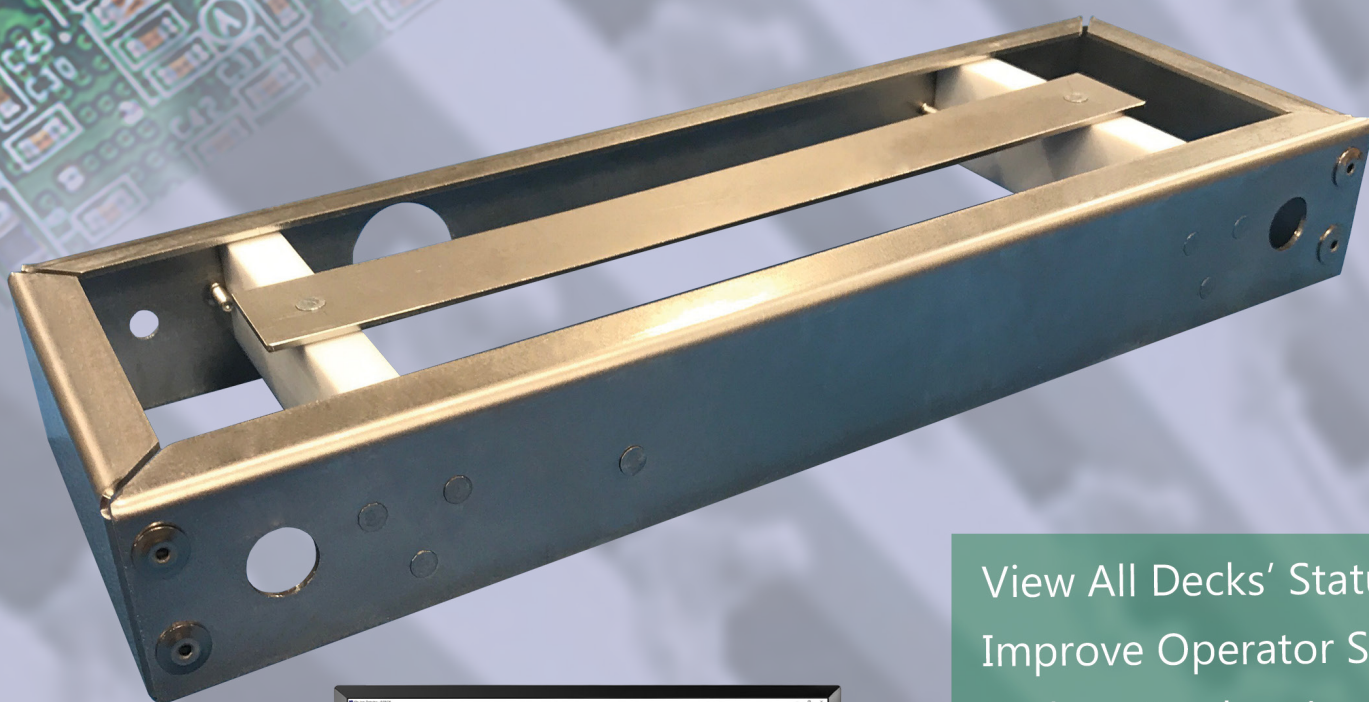


Kiln-Jam DETECTOR KJD-7000



View All Decks' Status
Improve Operator Safety
Reduce Product Loss
Decrease Kiln Damage
Shorten Clean-up Time

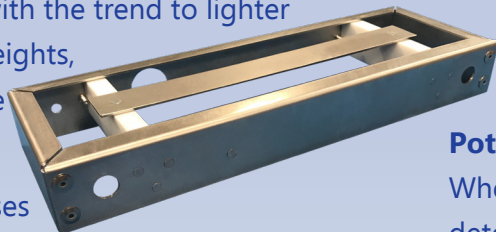


MEASUREMENT AND CONTROL
for MANUFACTURING QUALITY

KJD-7000

Kiln-Jam DETECTOR

A kiln jam is one of the most feared events that may happen in gypsum board manufacturing. Fortunately a rare occurrence, but with the trend to lighter and ultra-light board weights, jams are occurring more frequently.



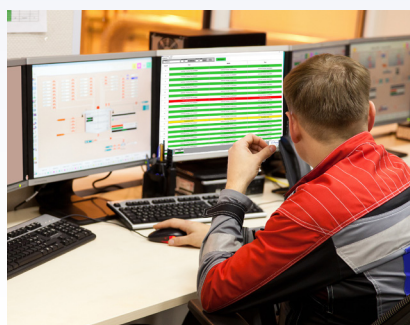
Potential significant losses include:

- Product loss inside the dryer
- Lost production during clean-up
- Kiln damage from jam or clean-up
- Operator injury from unsafe conditions when attempting to locate and clear jams

The key to minimizing losses is rapid kiln-jam detection.

The KJD-7000 enables gypsum board manufacturers to continuously monitor all decks and board streams and identify the exact location of a kiln jam as it happens. Early detection ensures quick clean up with minimum loss of product and production time.

Unlike earlier mechanical systems, the KJD-7000 system is non-contact and will not impede board movement. Build-up of silicone emulsions and siloxanes, which effect optical systems, have no influence on the RF sensors of the KJD-7000 system.

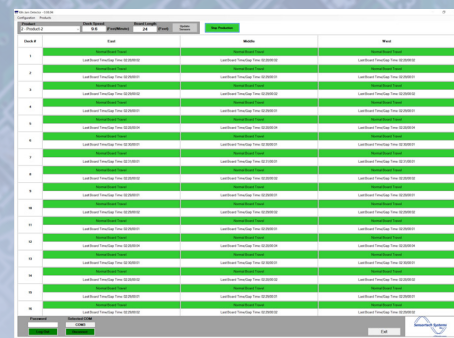


The KJD-7000 system empowers plant staff to monitor board flow status online from the convenience and safety of the office, away from the kiln.

MONITOR ALL DECKS WITH KJD-7000 SOFTWARE

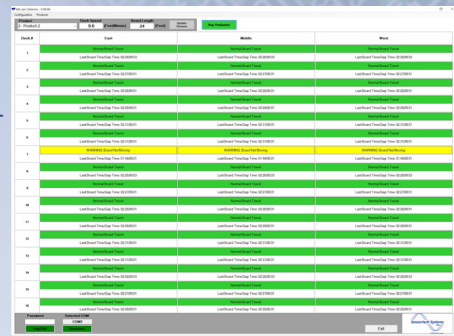
Normal Board Flow

When boards are running normally, the system displays the deck levels in green.



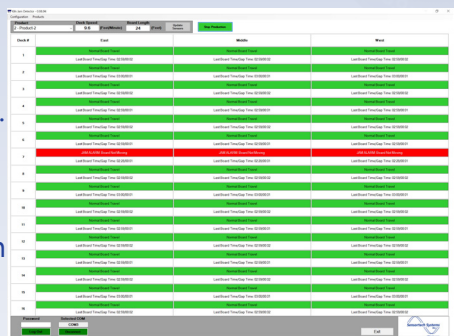
Potential Board Jam

When the system detects a nominal out-of-parameter board presence or absence, the deck position is indicated in yellow.



Actual Board Jam

A red signal alerts a definite jam detection. Knowing the exact deck level and board position operators can immediately initiate a jam contingency plan to safely rectify the issue and resume production in minimal time.



SENSOR SPECIFICATIONS

Maximum Operating Temperature:	375°C (750°F)
Sensors Per Zone Array:	Up to 48
Sensor Dimensions:	300mm x 100mm x 25mm (12in x 4in x 1.5in)

SENSORTECH SYSTEMS, INC., a KPM Analytics company, is a full design, development and manufacturing company specializing in moisture measurement technology. Our instruments support diverse industries throughout the world and we develop solutions for a comprehensive range of applications.



Sensortech Systems, Inc. Headquarters

341 Bernoulli Circle
Oxnard, CA 93030 (805) 981-3735
United States

sensortech.com
info@sensortechs.com

Sensortech Systems Europe

Distributiestraat 73 +31(0) 183 445051
4283 JN GIESSEN
The Netherlands

www.sensortechsystems.eu
info@sensortechsystems.eu

