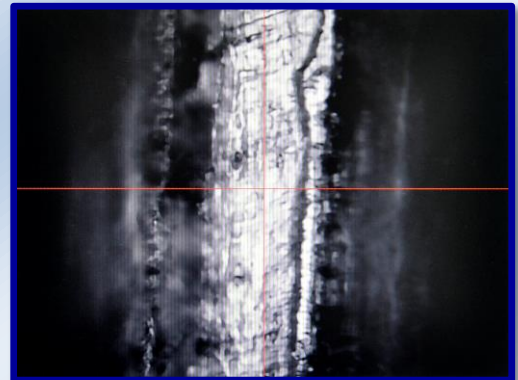


SRG-1 Score Residue Gauge



AT2E SRG-1 Score residue gauge is used to measure the score residue of can ends.

Adopted with the high precision optical components, which ensures the high definition of the score profile images and measure accuracy. Equipped with long working distance lens which is more compatible to different types of end with different score positions.

Applicable for the score measurement of various kinds of can ends. Such as RPT, SOT, EO, etc.

Technical specifications:

- Applicable sample type: RPT, SOT, EO
- Measure range: 0-10mm
- Resolution: 0.001mm
- Reproducibility: 0.002mm
- Lens working distance: 8.2mm
- Magnification: 1000 X
- Size: 280 x 350 x 610 mm
- Weight: 19kg

