

AMTT-2 Automated Torque Tester

- CFR21-11 / FDA compatible



Quick clamping system



Protection window design

AT2E's AMTT-2 Automated Torque Tester is specially designed for measuring and controlling the torque of cap on cassette bottle, vials and plastic bottle. It's stainless steel design complies with the industrial standard. Our AMTT-2 is designed with a special mechanical system for measuring torque which cancels most non-coaxial and top load influences on the measurement. Our quick clamping system is compatible for different sizes of samples and makes the sample clamping easy and simple. These features cancel most operator induced influences on the measurement for maximum repeatability.

With high resolution touch screen, it's very user-friendly and operator, sample, test information can be displayed. The real-time torque curve will be displayed along with test process. "One key measure" design makes the measurement to be extremely easy. "Given Angle" & "Given Torque" modes satisfy different measuring request.

Using with "QUALITORQ-P" software, it's very convenient and efficient to save, manage and analyze the data and create a report.



Operation Screen

Technical specifications:

- Using by touch screen display
- Measuring range: 00.00 to 30.00 Kgf.cm
- 2 measuring cycles (“Given Angle” & “Given Torque”)
- Units: Kgf.cm / N.m / Inch.lbs / N.cm
- Rotating speed adjustable
- Accuracy: ± 0.5 % of full scale
- 30 products memorization
- 4 thresholds (limits) option per product
- 10 operators memorization
- Configuration by protected password (administrator)
- Memorization up to 990 measures (transferable)
- Dynamic display: real-time curve / statistics / hour / date
- Display: product name / operator / batch N° / Sample N°
- 1 USB output and 1 printer output (software & printer)
- Language: English / Chinese
- Delivered with calibration certificate
- 110/230 V - 50/60 Hz
- Compatible for cassette bottle, vials, plastic bottle and other pharmaceutical packaging



Feature:

- Settable height of column for all samples
- Automated test process, high accuracy and repeatability
- Automatic zero before restarting cycle
- User-friendly touch screen design
- Easy-fast selector for cycles
- Settable measuring speed
- Various of safety design

Mechanical specifications:

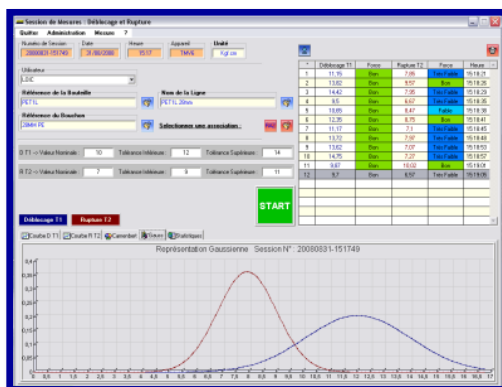
- Stainless steel frame
- Overall size: 360 x 543 x 916 mm
- Net weight: 50 kg

Optional parts:

- Mini printer
- QUALITORQ Software
- Calibration pack



Mini printer (Optional)



QUALITORQ Software

