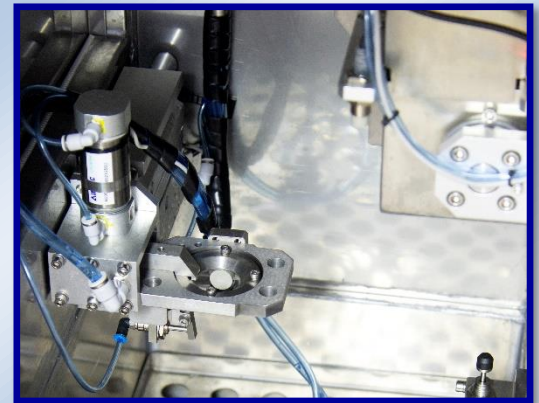


# BWCS-A Bottle Weight Control System



Automatic decapping and drying



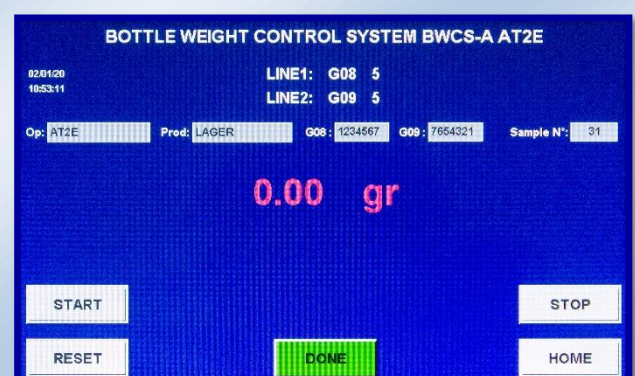
Star-wheel sample conveying unit

BWCS-A Bottle Weight Control System is an automatic system for controlling the bottle weight of crown capped products. It is able to auto measure the gross weight of the samples then measure the net weight of the bottles after they were emptied.

Multi-position design, higher efficiency and better repeatability. Measure data can be sent out to Data Acquisition Software for better data analysis and management.

## Technical specifications:

- PLC integrated, using by touch screen
- Multi-position design, higher efficiency
- Weighing range: 0-4000.00g
- Weighing resolution: 0.01 g
- Power supply: AC 220V (AC 110V optional)
- Rate power: 650 W
- Units: g
- Air supply: 5 - 8 Bar
- Water supply: tap water ( $\geq 1.5$  bar)
- Communication port: RS232
- Sample capacity: 10 samples max. (Please consult AT2E for other capacities)
- 10 operators memorization



Testing screen

- 30 products memorization
- Screen display: Real-time weighing value / Product name / Operator / Batch N° / Sample number
- Able to pre-store 30 batch numbers for each of the two production lines
- Configuration protected by administration passwords
- Language: English / French

**Automated part:**

- Safety door
- Star-wheel for sample conveying
- Robot arm for auto sample grabbing, then returns the emptied bottle to the star-wheel after sample was decapped and dried.
- Auto obtain the weighing data from balance and send out to Data Acquisition Software or system
- Auto zero before restarting cycle

**Mechanical specifications:**

- Stainless steel Frame
- Dimensions: 1085 (L) x 860 (W) x 1035 (H) mm
- Weight: 170 kg