

AMTG-2 Accurate Magnetic Thickness Gauge



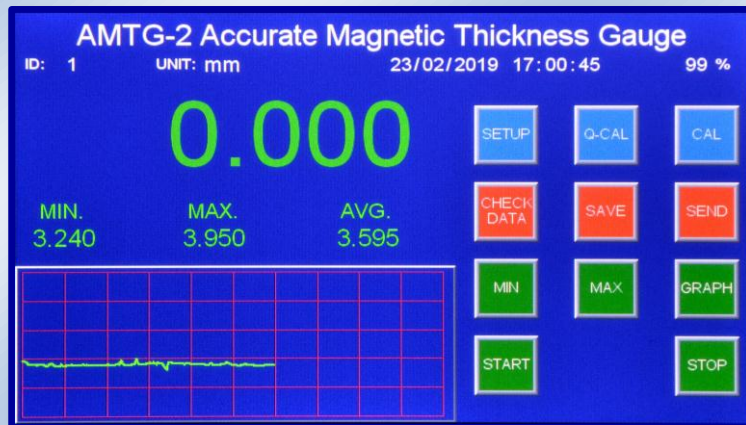
The "AMTG-2" is a portable feeler gauge. It is used to measure the thickness of non-magnetic materials, such as plastic, glass, ceramic, aluminum, titanium, copper etc... The accuracy of the measurement is not influenced by the shape of the samples.

It's designed by basing on the method of the Hall Effect. Simple and rapid measure as below:

- Place the steel ball on one side of the sample and the probe on the opposite side
- Move the sample and let the probe to be the tested position
- The steel ball will be drawn by the probe automatically
- The Hall Effect sensor on the probe measures the distance between the probe tip and the steel ball



AMTG-2 with probe



Main interface

Advantages:

- Non-destructive measure
- High resolution 7" touching screen
- Dynamic display: measuring value / graph / date / hour / battery life
- Full aluminum frame
- Fast and accurate measurement of the thickness
- Achieving accurate thickness measurement in corners, small radius and some irregular shape.
- Display real-time measurement value
- Max. and Min. mode: Automatic capture of the maximum or minimum value
- Value difference function: Display the value difference between preset value and actual measured value
- "CYCLE" function: Record the Max, Min, Average value & Graph during a predefined time. "Delayed start & Auto-stop" function frees the hands of operator and it's convenient for large-size sample measuring.
- Alarm function: Programmable, warns the high or low preset value by sound or visual indication
- Password function enables the safety of the calibration data and measuring data.
- Can store 4950 measurement data

Technical characteristics:

- Measure mode: Normal / High accuracy
- Display mode: Real-time / Minimum or Maximum
- Resolution: 0.01 mm or 0.001 mm (0.001 inch or 0.0001 inch)
- Display: TFT screen displays the real time reading, minimum reading, alarm status and data info
- Outputs: RS-232
- Calibration: Multi-point calibration (up to 21 points)
- Power supply: AC 110 - 240 V 50/60 Hz
- Units: mm / Inch
- Language: English
- Dimensions: 210 x 150 x 65 mm
- Net weight: 2 kg (Package weight: 5 kg)
- Measure range and accuracy (Custom made for range 0-4 mm or 0-8 mm or 0-10 mm)

Steel Ball Dia.	Thickness upper limit	Accuracy
5.00mm	10.00mm	1% \pm 0.003
4.76mm	6.00mm	1% \pm 0.003
3.18mm	4.00mm	2%
1.59mm	2.00mm	3%

For - BEVERAGE & FOOD / COSMETIC / PHARMACEUTICALS / CHEMISTRY / METROLOGY



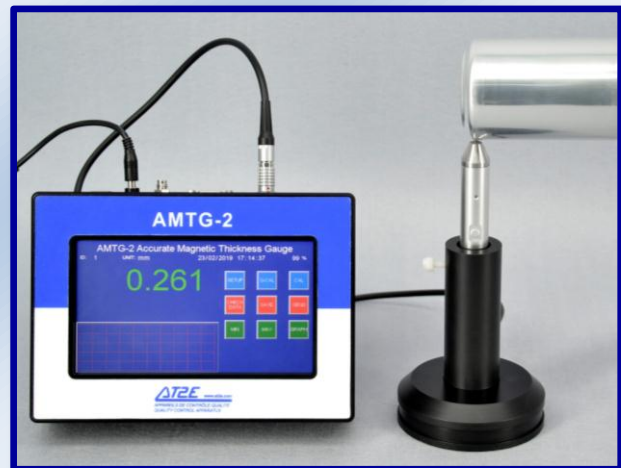
Plastic Measuring



Preform Measuring



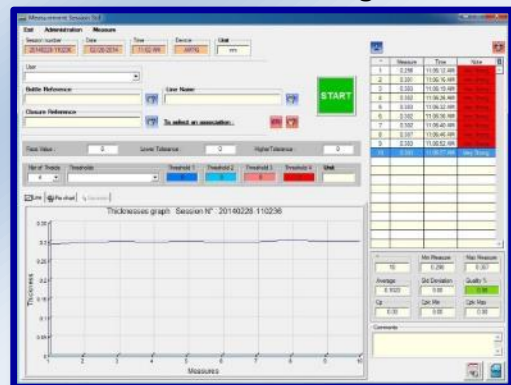
Glass Measuring



Aluminum Measuring



Portable case



“QualiMeasure” Software (Optional)

Standard configuration:

- Standard probe with cable and stand
 - Using manual
 - Charger
 - Steel balls* and supports
 - Foot switch
 - Portable case
 - Calibration blocks*
- * Steel balls included: 1.59 / 3.18 / 4.76 mm (3.18 / 4.76 / 5.00 mm for 0-8 mm and 0-10mm model)

* Calibration blocks configuration to be subject to the measure range

- 0-4mm measuring range: 9pcs of block gauge
- 0-6mm measuring range: 13pcs of block gauge
- 0-8mm measuring range: 17pcs of block gauge
- 0-10mm measuring range: 21pcs of block gauge