

PTLST-20-LT

A Portable Telescopic, Laser Sight Thermometer for general purpose, dull surface applications



FEATURES

- Temperature ranges from 32 - 2372°F (0 - 1300°C)
- High optical resolution up to 120:1
- Precise aiming with dual laser and scope sighting
- Adjustable emissivity from 0.100 - 1.000
- For electrical preventative maintenance - paper, aggregate, organic powders, wood, rubber, food, glass, etc.
- MAX/MIN function and audible and visible HIGH-/LOW-alarm
- USB interface, PSC Connect Software
- Data logger for 2000 measured values

General Specifications

Ambient temperature	32 - 122°F (0 - 50°C)
Storage Temperature	- 4 - 140°F (-20 - 60°C)
Relative Humidity	10 - 95%, non-condensing
Size	10.3 x 8 x 2.36 in/264 x 203.5 x 60 mm
Weight	2.2 lbs/1000 g

Electrical Specifications

Outputs/digital	USB Interface
Power	Ni-MH rechargeable battery
BatteryLifeTime	5 hr laser and backlight or 25 hr w/o laser and backlight
Charge	Battery charger
Adapter	110VAC to 240VAC (50/60Hz)

Measurement Specifications

Temperature range	32 - 2372°F (0 - 1300°C)
Optical resolution	120:1
System accuracy	±1% of reading ±2°C
Repeatability	±0.5% of reading ±1°C
Response time	300 ms
Emissivity (adjustable)	0.100 - 1.000
Sighting	Dual lasers
Sighting scope	All models
Signal processing	MAX/MIN, Scan/Hold function
Alarm functions	Audible and visible HIGH/LOW
Data storage	2000 values
LCD-Backlight	Three color alarm notification Green - normal operation Blue - low set point Red - high set point

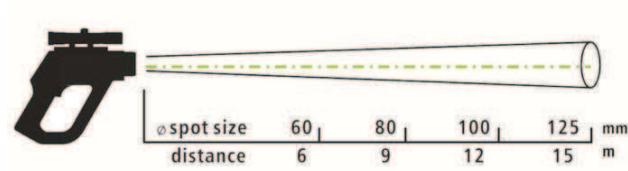
PTLST-20-LT

Technical Data	PTLST-20-LT
Temperature range	32 - 2372°F (0 - 1300°C)
System accuracy	±1% of reading ±2°C
Repeatability	±0.5% of reading ±1°C
FOV (Field of View)	120:1
Response time (95%)	300 ms
Spectral range	8-14 μ
Emissivity	adjustable: 0.100 to 1.000
Alarm	•
Laser	dual laser
Focus	1" spot @ 8 ft / 4" spot @ 39 ft
Sighting Scope	•
Outputs / digital	USB interface
MAX/MIN/HOLD	•
Data Logger	2000 values
Software	PSC Connect Software
Battery Charger	•
Ni-MH battery	•
Carrying case	•
Tripod mount	1/4 inch - 20 UNC

- Standard accessories

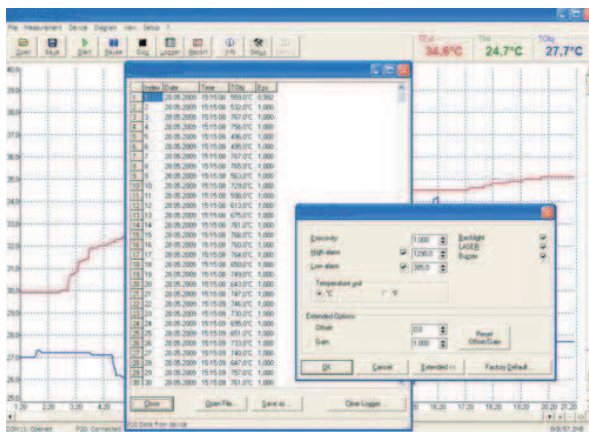
Optical specifications

PTLST-20-LT



D:S = 120:1

PSC Connect Report Software



- Setup of parameters
- Download of logger data
- Display and record of temperature trends
- Image based report function

787 Susquehanna Avenue
Franklin Lakes, NJ 07417
PH: 201-485-8773
FX: 201-485-8110

PROCESS SENSORS CORPORATION
www.processsensorsIR.com
irtemp@processsensors.com

113 Cedar Street, S-1
Milford, MA 01757
PH: 508-473-9901
FX: 508-473-0715

PSC PTLST-20-1M/2M

A Portable Telescopic, Laser Sight Thermometer for demanding applications



FEATURES

- Temperature ranges from 725 - 3252°F (385 - 1800°C)
- High optical resolution up to 300:1
- Precise aiming with dual laser and scope sighting
- Adjustable emissivity from 0.100 - 1.000
- Short wavelength spectral responses - minimizes temperature errors due to changes in product emissivity
- MAX/MIN function and audible and visible HIGH-/LOW-alarm
- USB interface, PSC Connect Software
- Data logger for 2000 measured values

General Specifications

Ambient temperature	32 - 122°F (0 - 50°C)
Storage Temperature	- 4 - 140°F (-20 - 60°C)
Relative Humidity	10 - 95%, non-condensing
Size	10.3 x 8 x 2.36 in/264 x 203.5 x 60 mm
Weight	2.2 lbs/1000 g

Technical Specifications

Outputs/digital	USB Interface
Power	Ni-MH rechargeable battery
BatteryLifeTime	5 hr laser and backlight or 25 hr w/o laser and backlight
Charge	Battery charger
Adapter	110VAC to 240VAC (50/60Hz)

Measurement Specifications

Temperature ranges	1202 - 3272°F/650 - 1800°C (1M) 725 - 2912°F/385 - 1600°C (2M)
Optical resolution-1M/2M	300:1
System accuracy-1M/2M	±0.3% of reading ±1°C
Repeatability-1M/2M	±0.1% of reading ±1°C
Response time-1M/2M	100 ms
Emissivity (adjustable)	0.100 - 1.000
Sighting-1M/2M	Dual lasers
Sighting scope	All models
Signal processing	MAX/MIN, Scan/Hold function
Alarm functions	Audible and visible HIGH/LOW
Data storage	2000 values
LCD-Backlight	Three color alarm notification Green - normal operation Blue - low set point Red - high set point

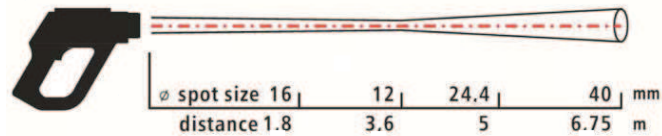
PSC PTLST-20-1M/2M

Technical Data	PTLST-20-1M	PTLST-20-2M
Temperature range	650 - 1800°C	385 - 1600°C
System accuracy	±0.3% of reading ±1°C	
Repeatability	±0.1% of reading ±1°C	
FOV (Field of View)	300:1	
Response time (95%)	100 ms	
Spectral range	1.0 μm	1.6 μm
Emissivity	adjustable: 0.100 to 1.000	
Alarm	•	
Laser	dual laser	
Focus	0.47 in @ 11.8 ft/12 mm @ 3.6 m	
Sighting Scope	•	
Outputs / digital	USB interface	
MAX/MIN/HOLD	•	
Data Logger	2000 values	
Software	PSC Connect Software	
Battery Charger	•	
Ni-MH battery	•	
Carrying case	•	
Tripod mount	1/4 inch - 20 UNC	

- Standard accessories

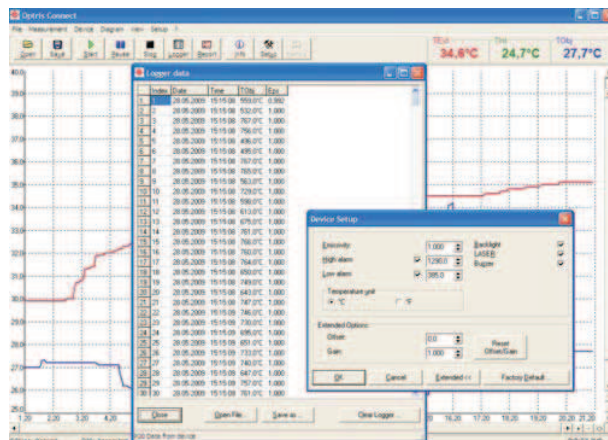
Optical specifications

PTLST-20-1M/2M



D:S = 300:1

PSC Connect Report Software



- Setup of parameters
- Download of logger data
- Display and record of temperature trends
- Image based report function