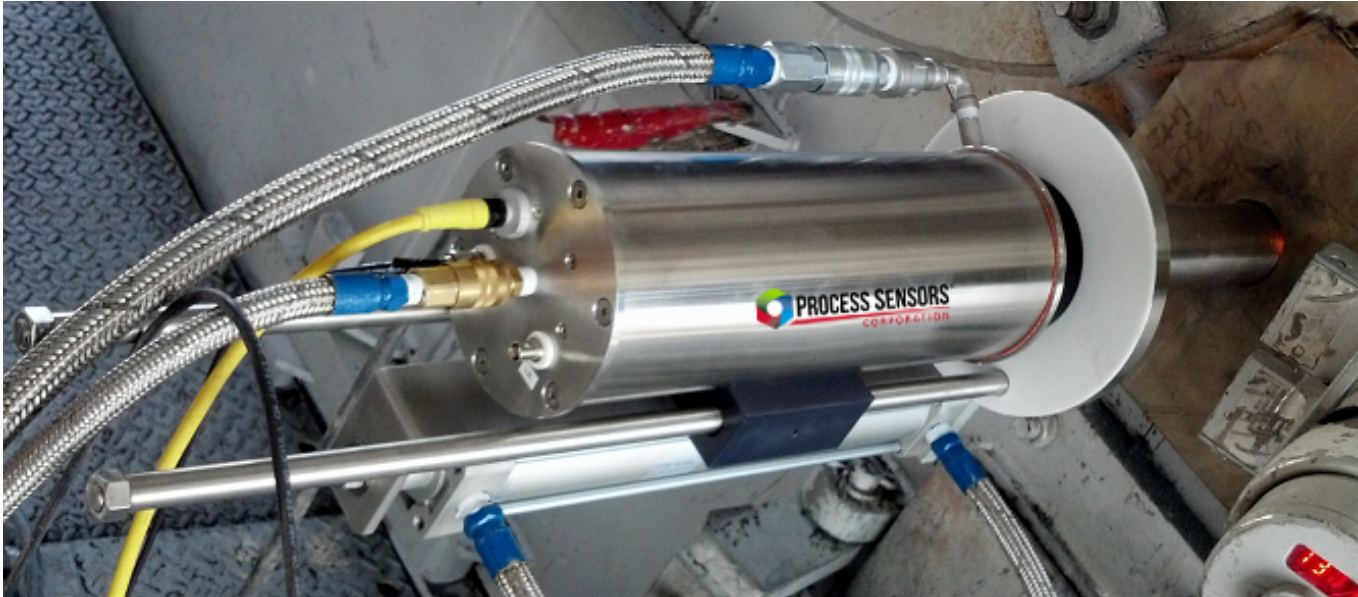


PSC-12C-DW

Dual-Wavelength Imaging Camera for Kilns



- **High resolution imaging and ruggedized design for durability**
- **Advanced fisheye lens tube for wide angle viewing**
- **User-friendly processing and analysis software**
- **Retractable camera protection device**

The PSC-12C-DW is a state-of-the-art, real-time imaging system for high temperature process monitoring of kiln interiors. This combination of state-of-the-art multiple wavelength imaging with real-time data acquisition/processing gives the operator an excellent tool for increasing productivity, efficiency, and safety.

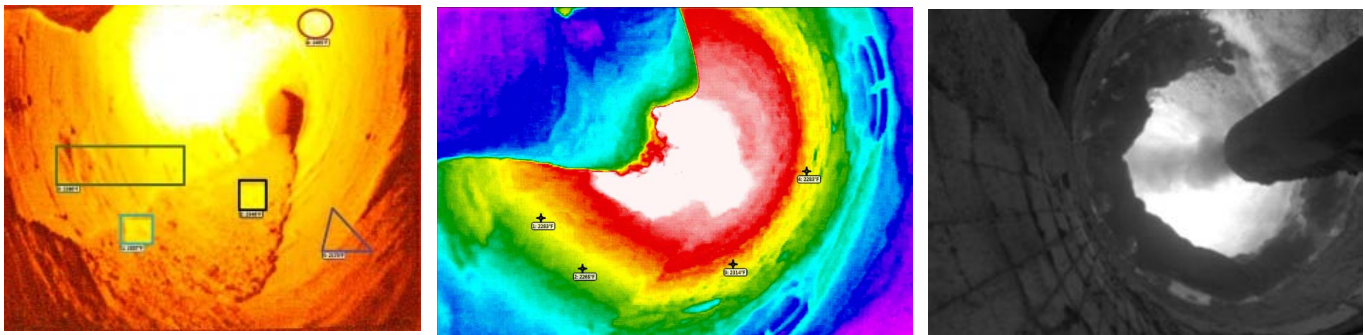
Functionality includes the ability to observe live process conditions and obtain a color thermograph of the kiln interior, while simultaneously monitoring the temperature of unlimited regions of interest and comparing to operational parameters of the kiln. I/O options include a standard network interface, optically isolated 4-20 mA outputs, and/or OPC connectivity.

Infrared wavelengths are optimized to see through smoke, ash, and haze. PyroCamera-HD software gives operators the ability to visually observe process conditions and obtain non-contact process temperature data simultaneously. Multiple lens tube lengths available.

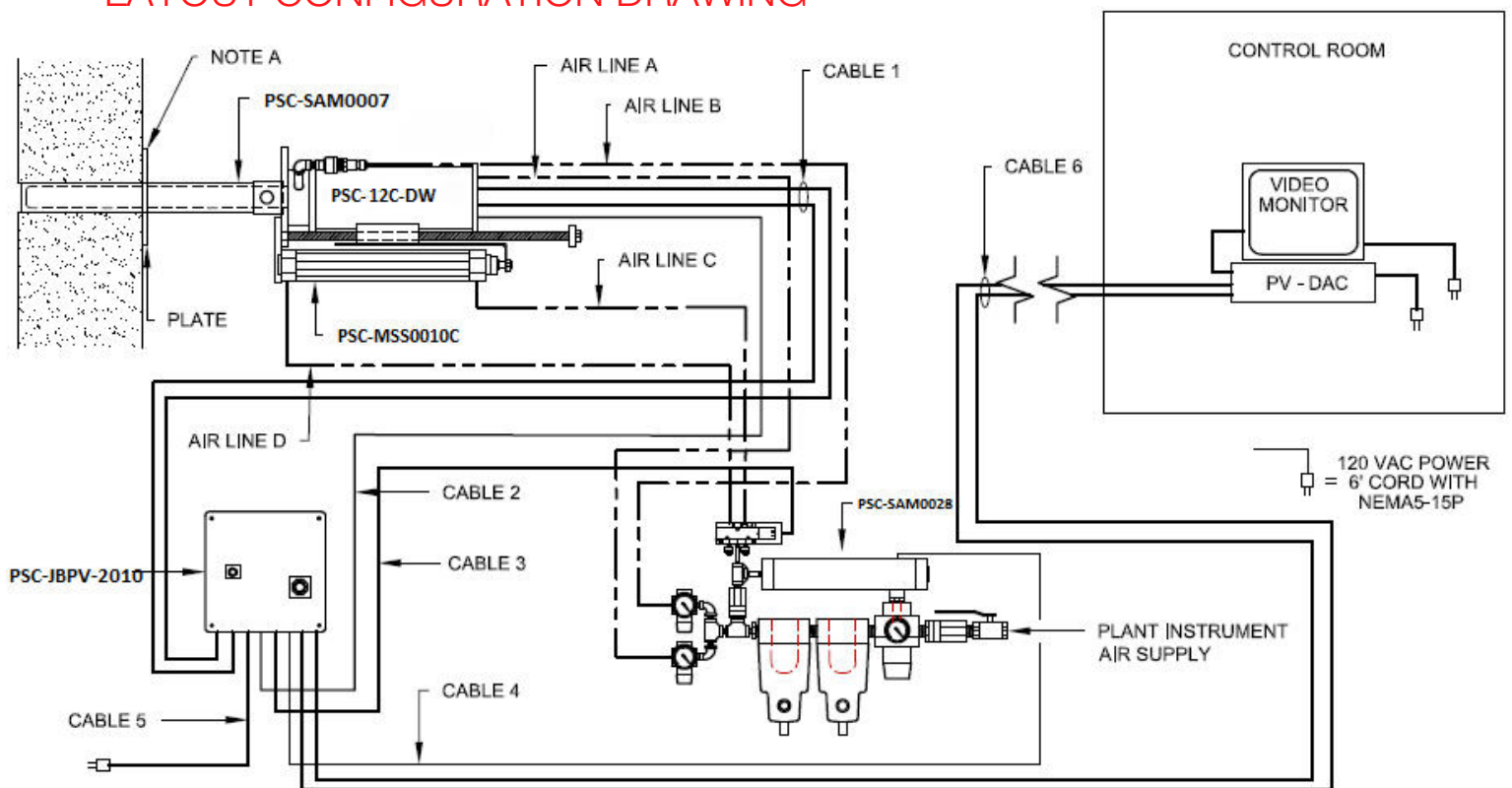
PSC-PyroCamera-HD

The PSC-PyroCamera-HD software is designed for full function image storing, retrieving, and data processing for up to 4 cameras per DAC unit via “digital VCR” function. User definable alarm parameters for unlimited regions of interest, continuous real-time video, and image fine tuning for optimal size, contrast, brightness, color palette, and vignette filtering enables the user to customize the sensor as much as they like.

A wide range of data reporting options are also available, enabling the user to save data in whichever format is best for their application. Remote access capability allows streaming and view output anywhere on the user's network. The graphic user interface (GUI) can also be manipulated, and multiple cameras can be viewed at once. Camera installation and maintenance is simple with its window operating system and quick calibration.



LAYOUT CONFIGURATION DRAWING



PROCESS SENSORS CORPORATION

787 Susquehanna Avenue, Franklin Lakes, NJ USA • Tel: 774-399-0461 • Fax: 201-485-8770 • ProcessSensors.com •

IRtemp@processsensors.com

Headquarters: 8 Technology Drive, Westborough, MA 01581 USA • Tel: 774-399-0500 • Fax: 508-473-0715