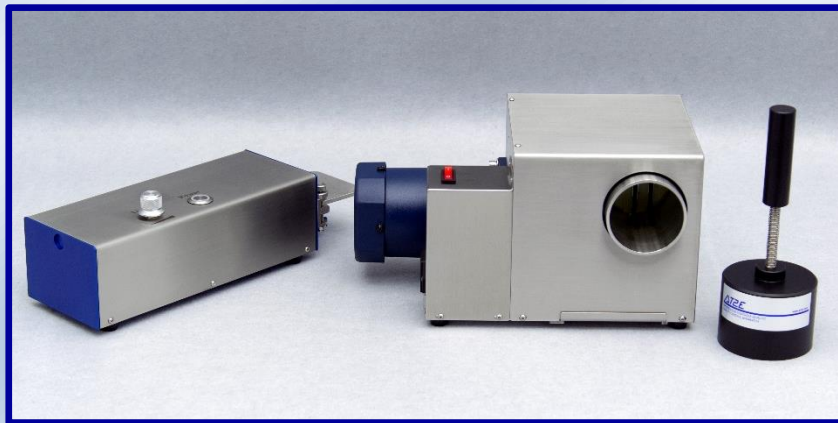
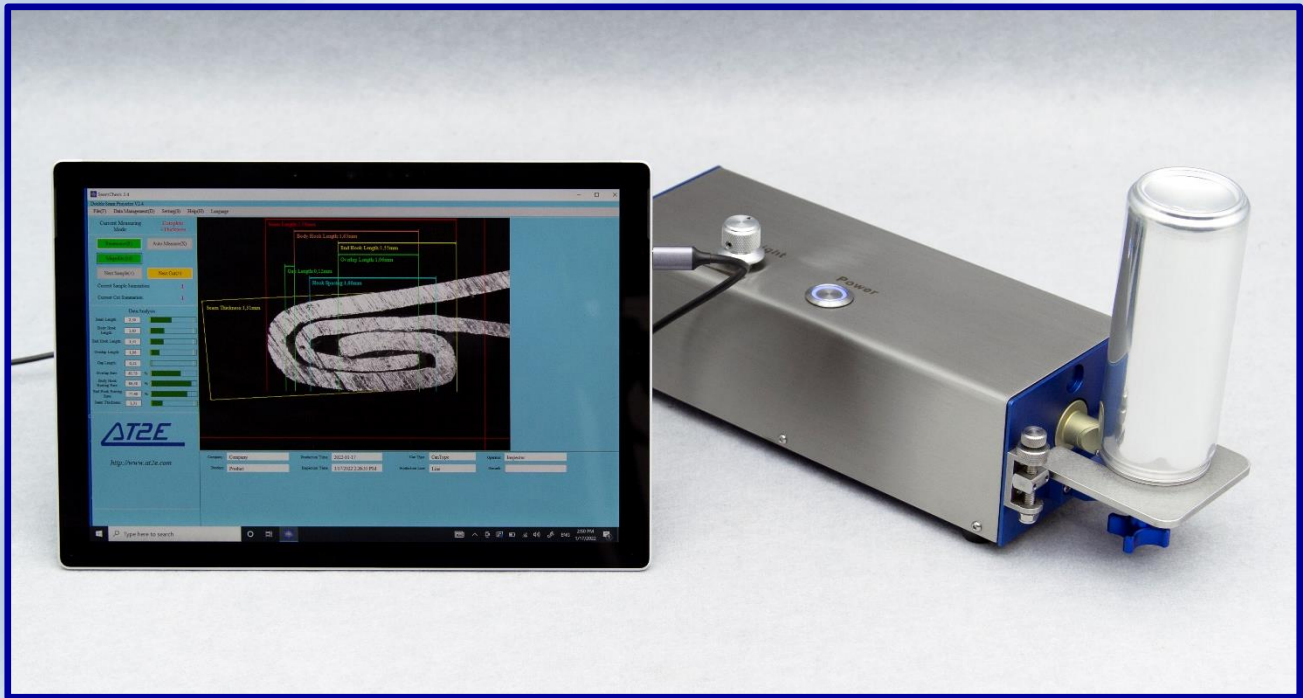


SeamCheck-P

Portable Double Seam Projector & Seaming Cutting Saw

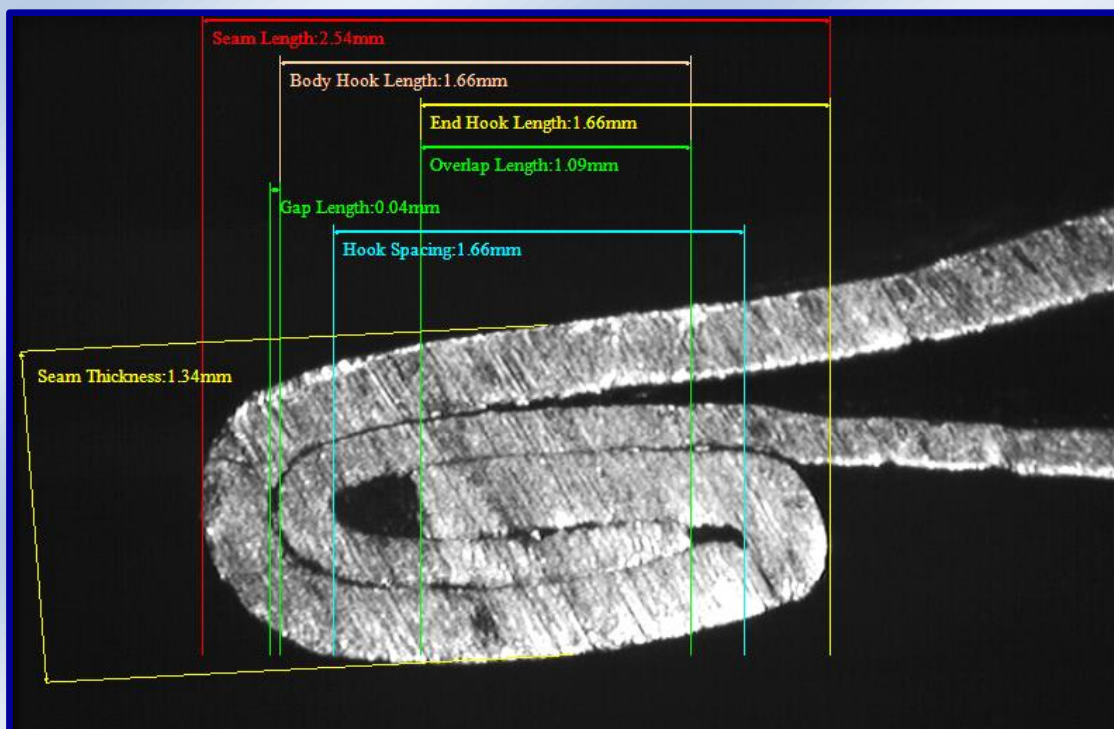


Seaming quality is critical and important for can inspection. And it's the one of the most concerned point for can, beverage and food manufacturing companies. AT2E portable double seam projector & seaming cutting saw provide the most convenient way to accomplish the seam inspection and seaming cutting. Optimized design, the projector and saw are smaller in size and more flexible in space set up. The latest UHD CCD camera which provides higher image resolution and definition, with the further enhanced image contrast, the seam projector is able to obtain a better seam profile image.

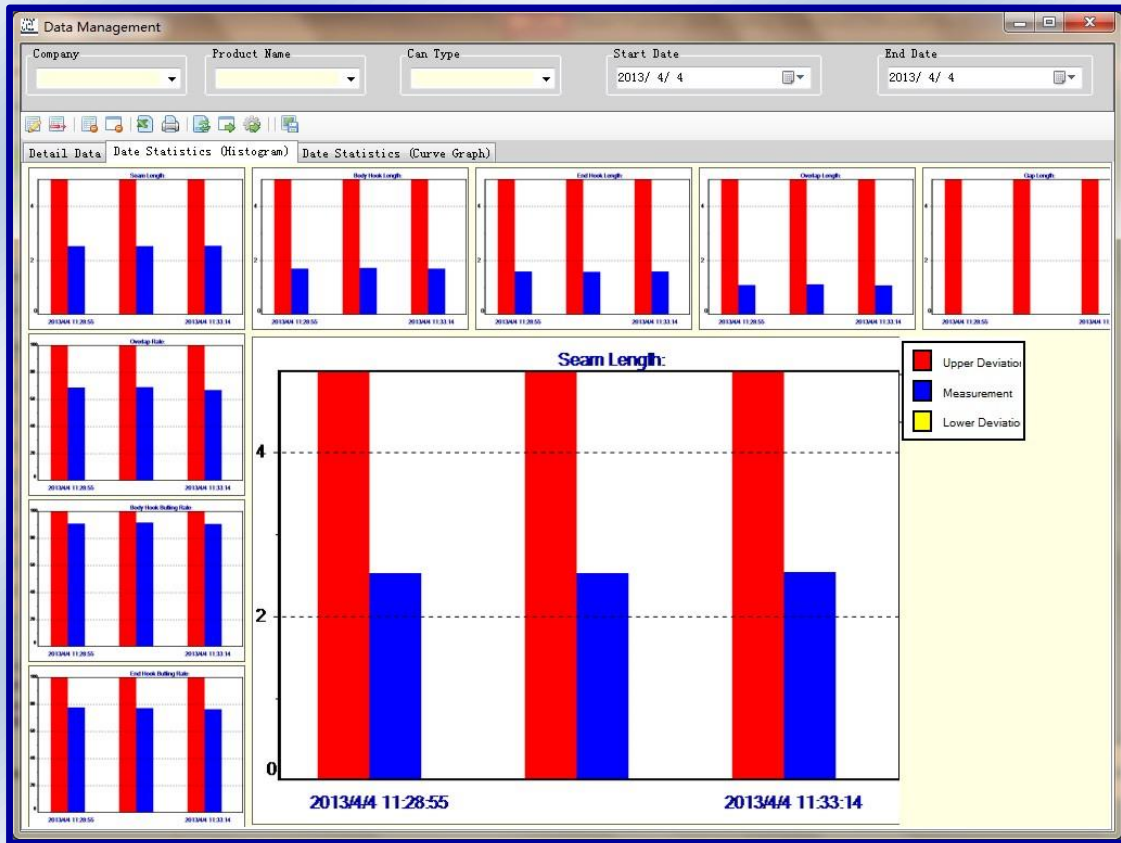
Using with AT2E seam saw, a clear seam section image could be obtained. Along with professional SeamCheck plus software, a fast and accurate seam measurement could be done.

Characteristics:

- Automatic line positioning (auto-measure function), measurement will be done in 1 second
- Equipped with advanced video capture device which interference-free of external light source and ensured the high image definition
- Software adopted database management system, measuring results and images can be saved in the database and users can review the saved data at any time
- 9 measuring parameters: Seam Length, Body Hook Length, End Hook Length, Overlap, Seam gap, Overlap rate, Body Hook lapping rate, End Hook lapping rate, On-screen Seam Thickness. (Able to extend to 12 parameters through extra gauges, included actual Seam Thickness, actual countersink and Tightness)
- SPC compatible, use a data adapter to collect the data from Mitutoyo Digital Indicator (Actual Seam Thickness; Actual countersink; Actual can height, Actual flange width)
- Data can be exported as an Excel file
- Report format can be customized, flexible for different report styles of different companies
- Predefine various qualification standards, auto judge and warn whether the results are qualified in every measure
- Measurement results and label lines mark directly on the image, results will also display in corresponding field on the screen
- Graph chart statistic function, automatically analyze and compare the measurement results
- Magnifier option enable users to magnify the testing image for a more accurate line positioning
- Measured values are displayed in on-screen and alarm if values are not within specs
- Seam image can be printed and stored
- Provided with calibration piece, calibrate at any time
- Platform adjustable
- Light adjustable



Seam measuring screen



Data statistic screen

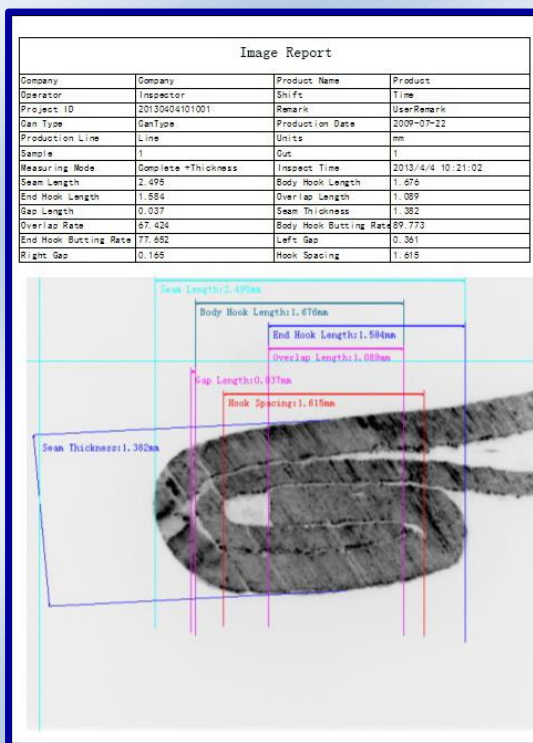
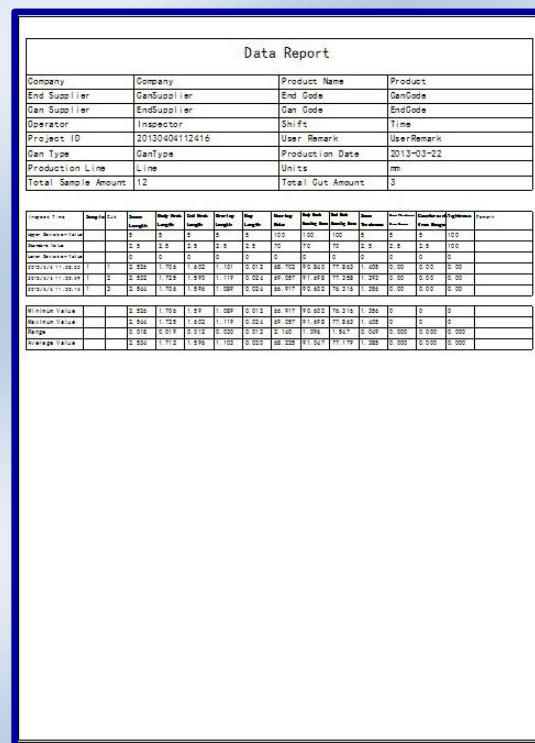


Image Report



Data Report

Technical specifications:**Portable Double Seam Projector**

Power supply:	100 – 240 V / 50 – 60 Hz
Device power supply:	DC 5V / 1A
Video signal interface:	USB 2.0
Resolution:	0.01 or 0.001mm
Accuracy:	0.005 mm
Magnification factor:	60 X
Line positioning magnification factor:	180 X
Platform capacity:	Up to 66 mm dia. Can (Could be customized)
Dimension:	363.5 (L) x 115 (W) x 117 (H) mm
Net weight:	3 kg

Seaming Cutting Saw

Sample range:	2-pcs and 3-pcs can with diameter up to 66 mm dia. Can
Blade dimension:	80x22x0.5 mm (240 teeth)
Motor speed:	approx 1200 rev/min
Working voltage:	220 V (others by request)
Dimension:	311 (L) x 203 (W) x 175 (H) mm
Net weight:	9 kg

Standard configuration:

1. SeamCheck Plus video seam projector (tablet PC is not included)
2. SeamCheck 1.2 professional seam measurement software
3. 2 mm calibration piece
4. Portable Seaming cutting saw with handle

Optional compact parts:

1. CG-D countersink gauge
2. STG-1 seam thickness gauge
3. Secure seal test tools for can

**Portable case for all items**