

# Packing inspection unit **miho Gauss P**



Packing inspection unit miho Gauss P

## Advantages

- **Contactless inspection for completeness and right geometrical arrangement of containers in trays and shrink packs**
- **Suitable for cans and beverage carton in carton trays or bottles in shrink packs**
- **Easy and fast installation**
- **Easy teach-in of new packages**
- **No mechanical adjustment necessary at change-over**
- **Inspection independent from the color of trays or containers**

## Function

The packing inspection unit miho Gauss P inspects a wide range of packed bottle crates to see if they are complete and correctly arranged. The inspection unit is usually installed after the packer/shrink tunnel and before the palletiser.

### What is inspected:

- Bottles in returnable crates
- Cans in cardboard trays
- Beverage carton packaging in cardboard trays
- Bottles in shrink packs

No mechanical adjustment of the machine is necessary when the crate format changes. The inspection results, parameter values, and user logins are logged. An optional interface enables remote maintenance access and data transfer via Ethernet.

## Technology

The packing inspection unit miho Gauss P is equipped with the latest camera and computer technology. The 3-D measurement of the packed crates allows for a reliable detection of any deviations of the outer shape. Therefore, the various formats of packed crates (for example, bottles in crates, cans in trays, bottles in shrink packs), missing containers and any measurement deviations can be reliably detected, regardless of the colour or other optical properties of the surface of the packages.

- Jet waterproof housing (IP 65) made of stainless steel
- Intuitive multi-touch operation using a 7 inch screen
- Floating output contact for line shutdown if there is an unacceptable crate.
- Alternative: output for controlling a crate reject system, see accessories
- Optical or acoustic signal

Counter function: total number of controlled crates, number of accepted crates, number of unacceptable crates

## Gauss product family

Other crate inspection units of the miho Gauss product family:

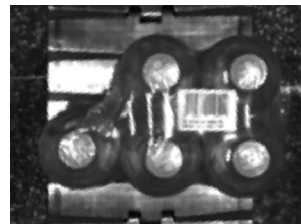
- Full crate inspection unit miho Gauss F
- Empty crate inspection unit miho Gauss E

## Network integration

- Diagnosis and online help through separate remote maintenance module
- Production data acquisition miho AWeS via Weihenstephaner Standard
- Intermediate storing of the operating data in case of failure of the existing network connection

## Reject systems

- Pneumatic crate reject system miho CR 2
- Segment reject system for crates miho Leonardo SK
- Two-way segment reject system for crates miho Leonardo SK 2W
- Three-way segment reject system for crates miho Leonardo SK X



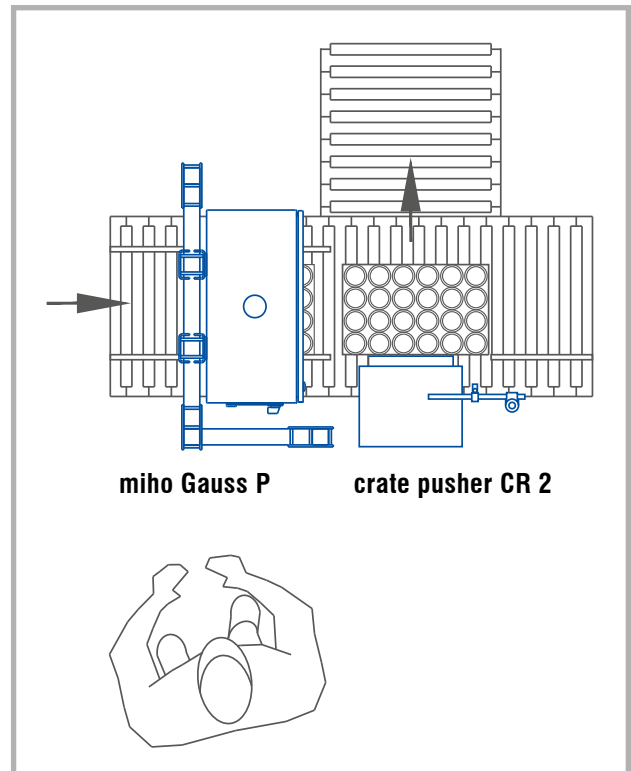
b/w image of pack view from above



Processed picture of pack: missing bottle detected



Segment-Ausleitsystem miho Leonardo SK



Exemplary Layout miho Gauss P