

VLT-PLC Vacuum Leak Tester (PLC Model)

(Air and water tightness test box: vacuum test)



Tests on:

Bottles: Glass or PET and Preforms

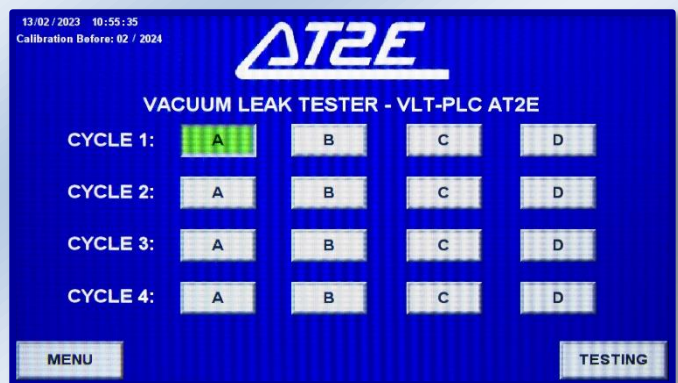
Caps: Aluminum, other metal, plastic

Cans: Aluminum, others

Pots: Caps, film, blisters etc.



Testing screen



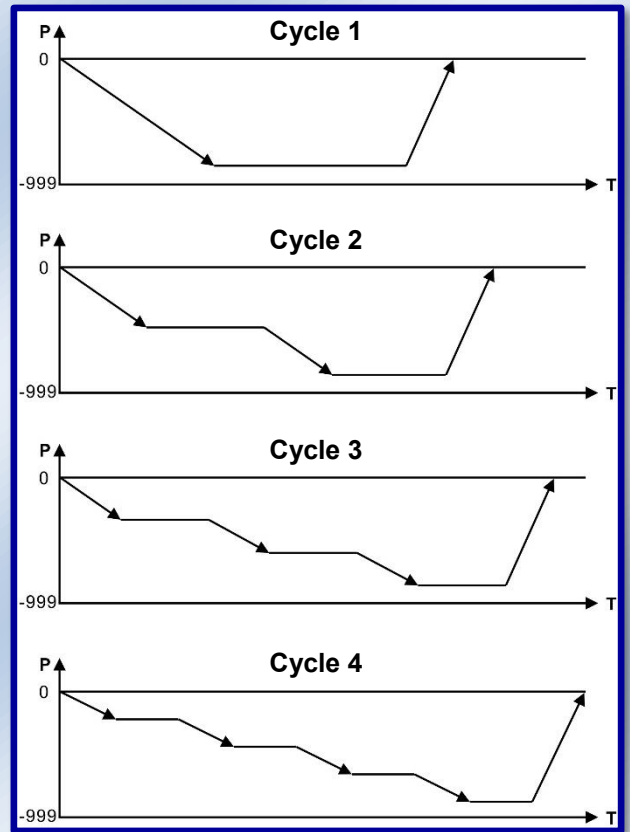
Cycle selecting screen

LEAK DETECTION BY SETTING VACUUM WITH OR WITHOUT STEP

Specifications:

- Vacuum adjustable up to - 999 mb.
- Box with dimensions upon request.
- Box made of polished transparent PMMA (very rugged).
- Easy to use and safe by touch screen PLC Control Panel.
- Dynamic display: Testing status / Date and time.
- Display: Product name / Operator / Batch No. / Sample No.

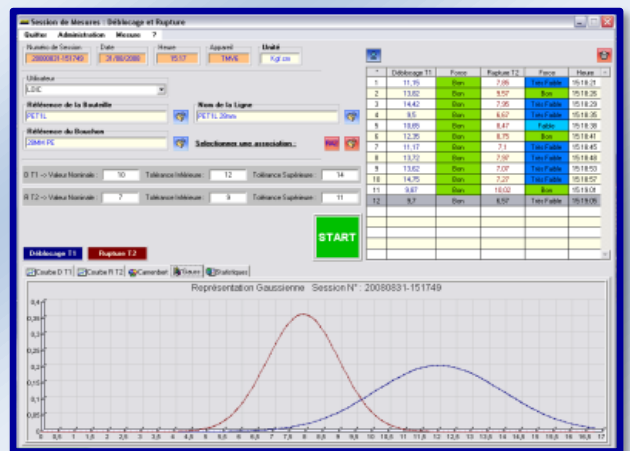
- User defined test cycle (up to 16 modes). Pre-define up to 4 steps of each test. Vacuum level and holding time are adjustable for each step. Satisfy different kinds of testing request.
- Configuration protected by administration passwords
- Easy operation by selecting the pre-defined mode for starting a test. No need to set the parameters each time.
- 10 operators and 30 products presettable
- Lot No. and Sample No. editable.
- Review of the testing curve.
- Configuration protected by administration passwords
- RS232 C output.
- Resolution: 1 mbar.
- Accuracy: 0.5% F.S.
- Delivered with high performance vacuum pump or run with 6 bar network with vacuum generator
- Quick and easy verification and calibration.



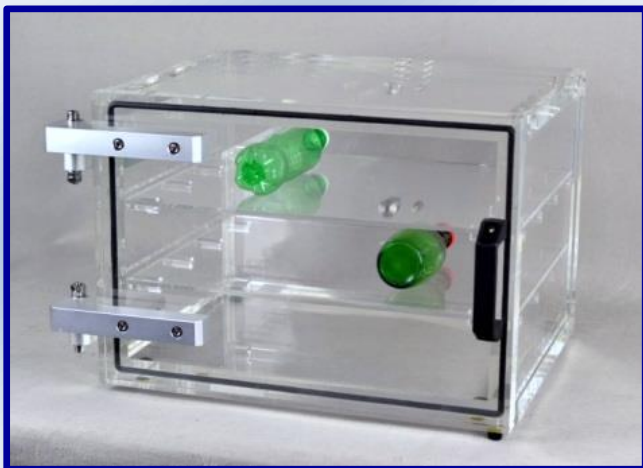
Test curve

Optional parts:

- Immersion system
- Shelf structure
- Stainless box
- Vacuum generator model
- Pressure or pressure and vacuum model (pressure up to 1 bar)
- Oil-free vacuum pump (vacuum -900 mb)
- High performance vacuum pump (vacuum -999 mb)
- Mini-printer
- Software QualiPress



Software QualiPress (Optional)



Box with front door and shelves



Mini-printer (Optional)



Cylinder design



Box with immersion system



**Stainless box
with front door and shelves**



Pressure and vacuum Stainless box



**Pressure and vacuum box
with small piercing needle**



Oil-free vacuum pump (Optional)