

FHT-1 Fill Height Tester



The FHT-1 Fill Height Tester is an instrument developed by AT2E for measuring the fill height volume and brimful volume in different containers. The automated measuring process which provides higher repeatability and reproducibility.

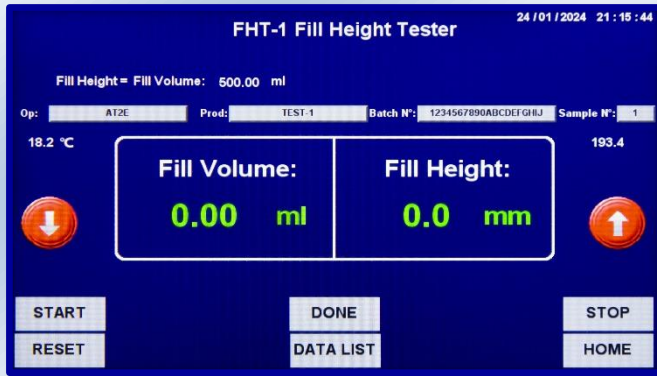
The FHT-1 Adopts high-precision liquid level detection system, which detects the liquid level in real time and auto switches the water filling rate accordingly, then obtains the weight through precision balance once the filling process is completed. Measurement result will be displayed on the screen after the measuring process is finished, and the test report can be printed out directly by the AT2E specified mini-printer.

The accuracy of FHT-1 meets the requirements of ISO 8106, while the flexible mode settings of the instrument is widely compatible with various in-house standards that being established according to the measuring requirements of the enterprises.

Working principle

- Auto positioning according to bottle height
- Auto water filling, fill height and/or brim full
- Auto weighing
- Auto calculation of fill height volume and/or brimful volume





Testing screen



Mode selection screen

Features

- Auto detection of bottle height, liquid level, fill volume, etc.
- Auto water temperature monitoring and recording
- Auto volume correction according to water density and temperature relation
- Auto record and display measure results
- PLC integrated & Touch screen control
- Three measuring modes:
 - Brim full volume
 - Fill height and brim full volume, measures the fill height according to the pre-defined fill volume, and choose to enable/disable the brim full volume measuring
 - Fill capacity and brim full volume, measures the fill capacity according to the pre-defined fill height, and choose to enable/disable the brim full volume measuring
- Auto filling rate control according to bottle specifications, improves measurement efficiency and ensures measurement accuracy
- Integrated module of the motion unit, high running speed and stability, easy maintenance
- Rich extension of optional accessories, including water recycling unit, mini-printer and QualiVol data management software
- Memory of 30 products, 10 operators, batch number, sample number (password protected)
- Easy installation of samples with auto centering design
- Displays all the information during cycle: time, setting, operator, product, Batch No., Sample No., Result
- RS232 output
- Stainless steel design ensures the durability of tester
- Overload protection



Technical specifications:

- Sample range
 - Diameter: 55 - 203 mm
 - Height: 150 - 440 mm
 - Mouth diameter: 16 - 53 mm
- Measure range: 0 - 3000 ml (other range by order)
- Balance weighing range: 0 - 5000 g (other range by order)
- Height resolution: 0.1 mm
- Volume resolution: 0.01 ml
- Accuracy: $\pm 0.5\%$ F.S.
- Air supply: 5 - 8 bar
- Power supply: AC 220V (AC 110V optional)
- Dimensions: 695 x 675 x 1060 mm (L x W x H)
- Weight: 125 kg



Model FHTT-1 with Top Load tester integrated

Optional parts:

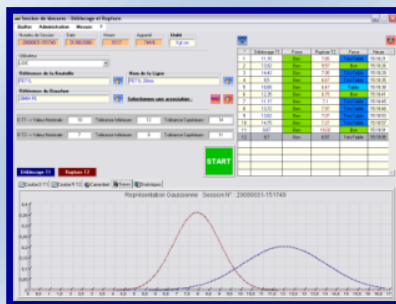
- Model FHTT-1 with Top Load tester integrated
- Calibration pack
- Mini-printer
- Water recycling unit
- QualiVol data management software



**Mini printer
(Optional)**



**Water recycling unit
(Optional)**



“QualiVol” software

Working Environment

- Clean tap water (water pressure ≥ 1.5 bar)
- Air supply: 5 - 8 bar (proper filtered clean and dry compressed air)
- Power supply: AC 220V (AC 110V optional)